

## **Delegated Decision**

**2 December 2024**

**Temporary Traffic Regulation Order**

**Ordinary Decision/Key Decision No.**



---

## **Report of NEIGHBOURHOODS & CLIMATE CHANGE**

**Paul Anderson – Strategic Highways Manager, Technical Services**

### **Electoral division(s) affected:**

Aycliffe North & Middridge Wards: Cllrs D Sutton-Lloyd, T Stubbs, M Stead

### **Purpose of the Report**

To consider a request for temporary traffic regulation by Order on 13 January 2025 for the purpose of new Virgin Media (Nexfibre) infrastructure installation works in the Harebell Meadows area of Woodham (scheme ref NBU20).

### **Recommendation**

It is recommended that the Council exercises its powers under the Road Traffic Regulation Act 1984 to effect a Temporary Traffic Regulation Order to facilitate the proposed works

### **Background**

Works are proposed by SU/contractor to undertake describe works within the confines of the highway.

### **Options**

Other traffic management arrangements have been considered and the most appropriate method is for temporary closures for approx.

### **Recommendation**

The recommendation is approved and that following, consultations with the Chief of Police, arrangements be made to progress the advertising of Public Notices and sealing of an Order.

---

**Contact:** Steven Galloway

Tel: 03000 267095

---

---

## **Appendix 1: Implications**

---

### **Legal Implications**

TTRO checked, prepared and advertised via Legal Services

### **Finance**

Costs to be charged to the scheme/applicant.

### **Consultation**

Chief of Police, Local Members, Public Transport Providers (via the Public Transport Team)

### **Equality and Diversity / Public Sector Equality Duty**

N/A

### **Human Rights**

No impact

### **Crime and Disorder**

N/A

### **Climate Change**

N/A

### **Staffing**

Network Management Team

### **Accommodation**

N/A

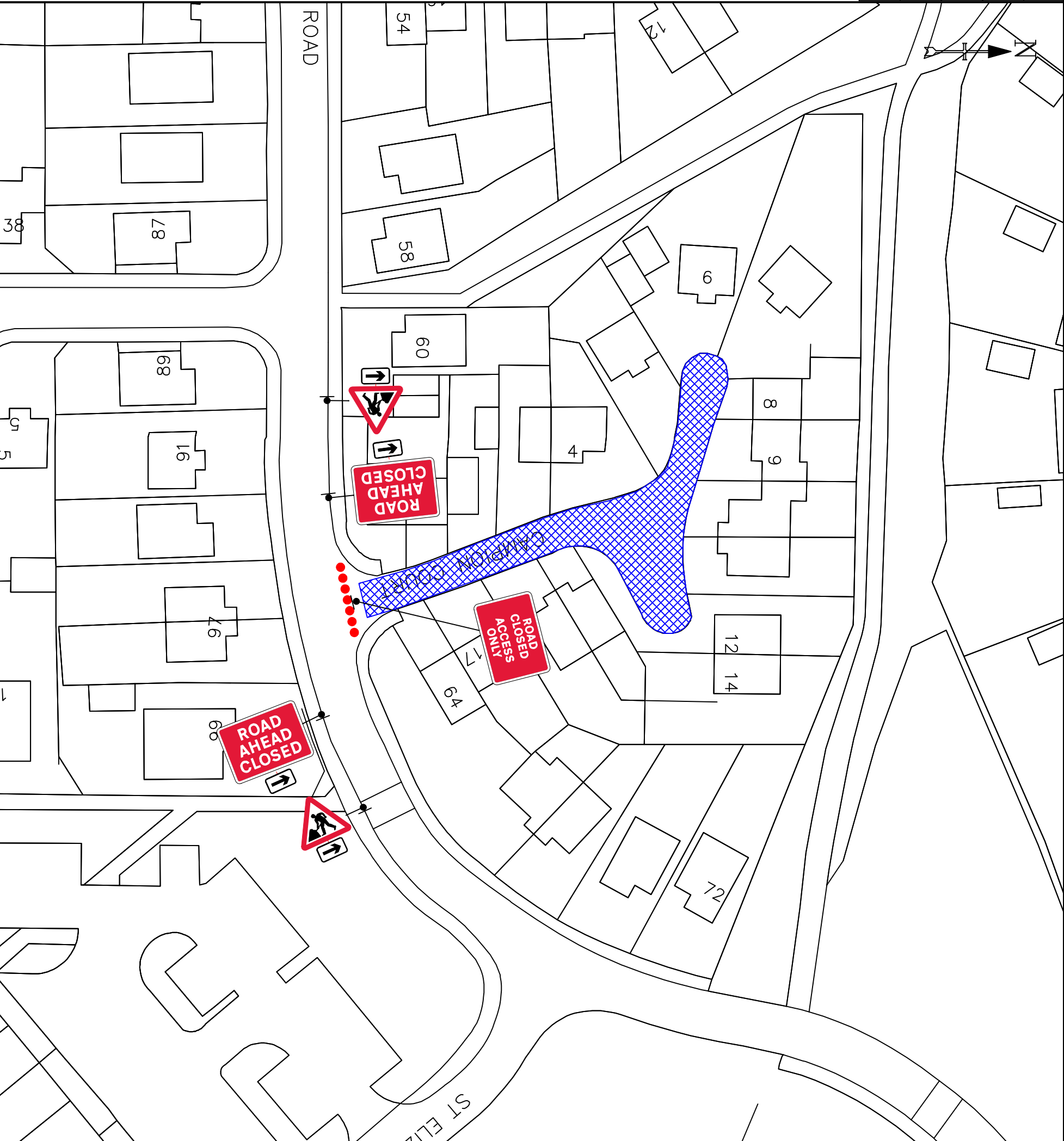
### **Risk**

N/A

### **Procurement**

Advertising in a public newspaper with costs recharged to the scheme/applicant

Dy/ 1 Ref: 13-9-RC/O Road Closed Access Only	
Dy/ 2 Ref: 573 Direction to hazard left	
Dy/ 2 Ref: 573 Direction to hazard right	
Dy/ 2 Ref: 701 Road works ahead	
Dy/ 2 Ref: 701-FC-13-9 Nature of temporary hazard ahead - Road Ahead Closed	



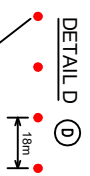
TEMPORARY  
TRAFFIC MANAGEMENT  
30 MPH

Issue	Date
1	12/11/24
Drawn By	JC

ROAD CLOSURE  
CAMPION COURT, NEWTON AYCLIFFE  
DL5 4UF

**DETAIL B**

- Single/Dual carriageway 40mph or less - 450mm traffic cones, spacing 1.5m.
  - Single/Dual carriageway 50mph or more - 750mm traffic cones, spacing 1.5m.
  - Dual carriageway national speed limit - 750mm traffic cones, spacing 1.5m, relaxation 5m.
- Notes:
- 1) During darkness, warning lights to BS EN 12352:2006 should be provided in accordance with Table A1.3 (Appendix 1).
  - 2) 45° tapered cones have 1.5m spacing, no relaxations.
  - 3) On dual carriageways and two-lane roads, warning lights should be provided on the leading side of the road and on the leading side of the road for lead tapers and the facing wall of lane changes.



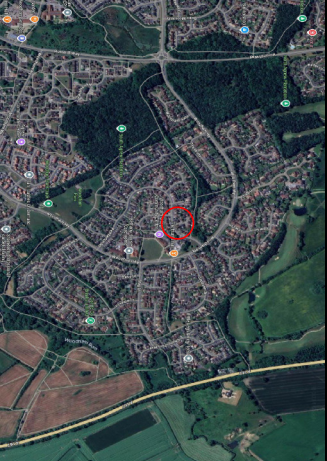
**DETAIL D**

Notes:

- 1) During darkness, warning lights to BS EN 12352:2006 should be provided in accordance with Table A1.3 (Appendix 1).
- 2) Detail D applies only to relaxation cases.

	Standard: Normal traffic including buses and HGVs	Restricted: Cars and light vehicles only
Two-way working	6.75 m minimum	5.25 m minimum
Shoulder working	3.25-5.50 m desirable width range	3.25 m desirable minimum width
	3.0 m absolute minimum	2.5 m absolute minimum

**Specials** -



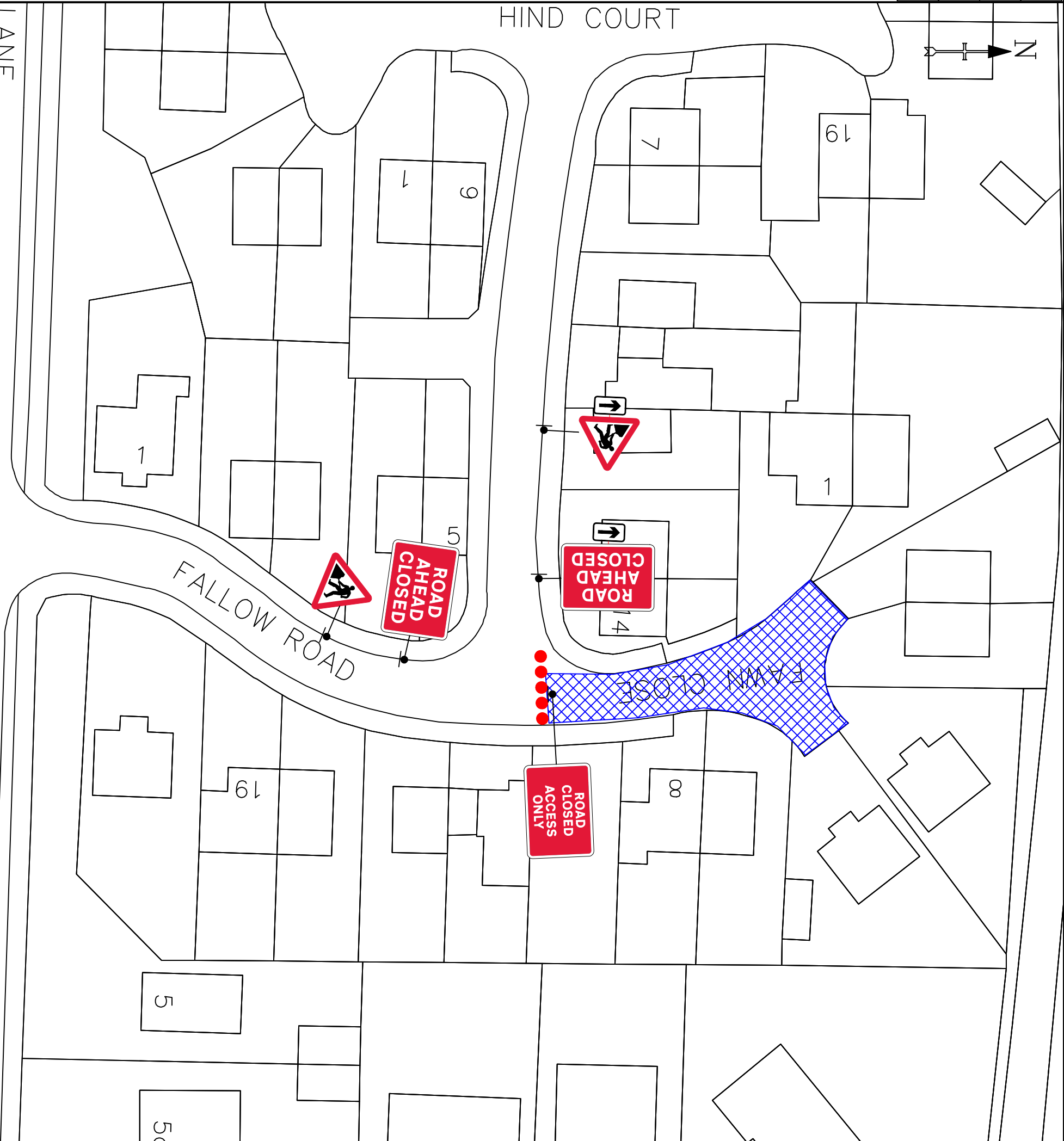
**Notes** -

**KEY**

	Traffic sign
	Traffic cone
	Traffic signals to Diagram 3000.1
	Working Space
	Pedestrian Barrier

Original drawing size A3 - NTS  
Drawing Ref: AVONLINE

Dy/ 1 Ref: 13.a.SCA0 Road Closed/Access Only	
Dy/ 2 Ref: 573 Direction to hazard left	
Dy/ 2 Ref: 7001 Road works ahead	
Dy/ 2 Ref: 7010.FP-13.9 Nature of temporary hazard ahead - Road Ahead Closed	



TEMPORARY  
TRAFFIC MANAGEMENT  
30 MPH

Issue	Date
1	12/11/24
Drawn By	JC

ROAD CLOSURE  
FAWN CLOSE, NEWTON AYCLIFFE  
DL5 4SX

**DETAIL B** (B)

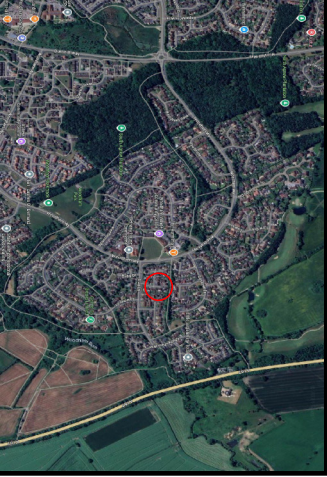
- Single/Dual carriageway 40mph or less - 450mm traffic cones, spacing 1.5m.
  - Single/Dual carriageway 50mph or more - 750mm traffic cones, spacing 1.5m.
  - Dual carriageway national speed limit - 750mm traffic cones, spacing 1.5m, relaxation 5m.
- Notes:
- During darkness, warning lights to BS EN 12352:2006 should be provided in accordance with Table A1.3 (Appendix 1).
  - 2145 tapers have 1.5m spacing, no relaxations.
  - 2145 tapers and 2145 tapers and 2145 tapers, 4m relaxation.
  - 2145 tapers and 2145 tapers, 4m relaxation.
  - 2145 tapers and 2145 tapers, 4m relaxation.

**DETAIL D** (D)

- Single/Dual carriageway 40mph or less - 450mm traffic cones, spacing 1.5m.
  - Single/Dual carriageway 50mph or more - 750mm traffic cones, spacing 1.5m.
- Notes:
- During darkness, warning lights to BS EN 12352:2006 should be provided in accordance with Table A1.3 (Appendix 1).
  - 2145 tapers have 1.5m spacing, no relaxations.
  - 2145 tapers and 2145 tapers, 4m relaxation.
  - 2145 tapers and 2145 tapers, 4m relaxation.

Standard	Standard	Restricted
Two-way working	6.75 m minimum	Cars and light vehicles only
Shuttle working	3.25-4.50 m desirable width range	5.25 m minimum
	3.0 m absolute minimum	3.25 m desirable minimum width
		2.5 m absolute minimum

**Specials -**



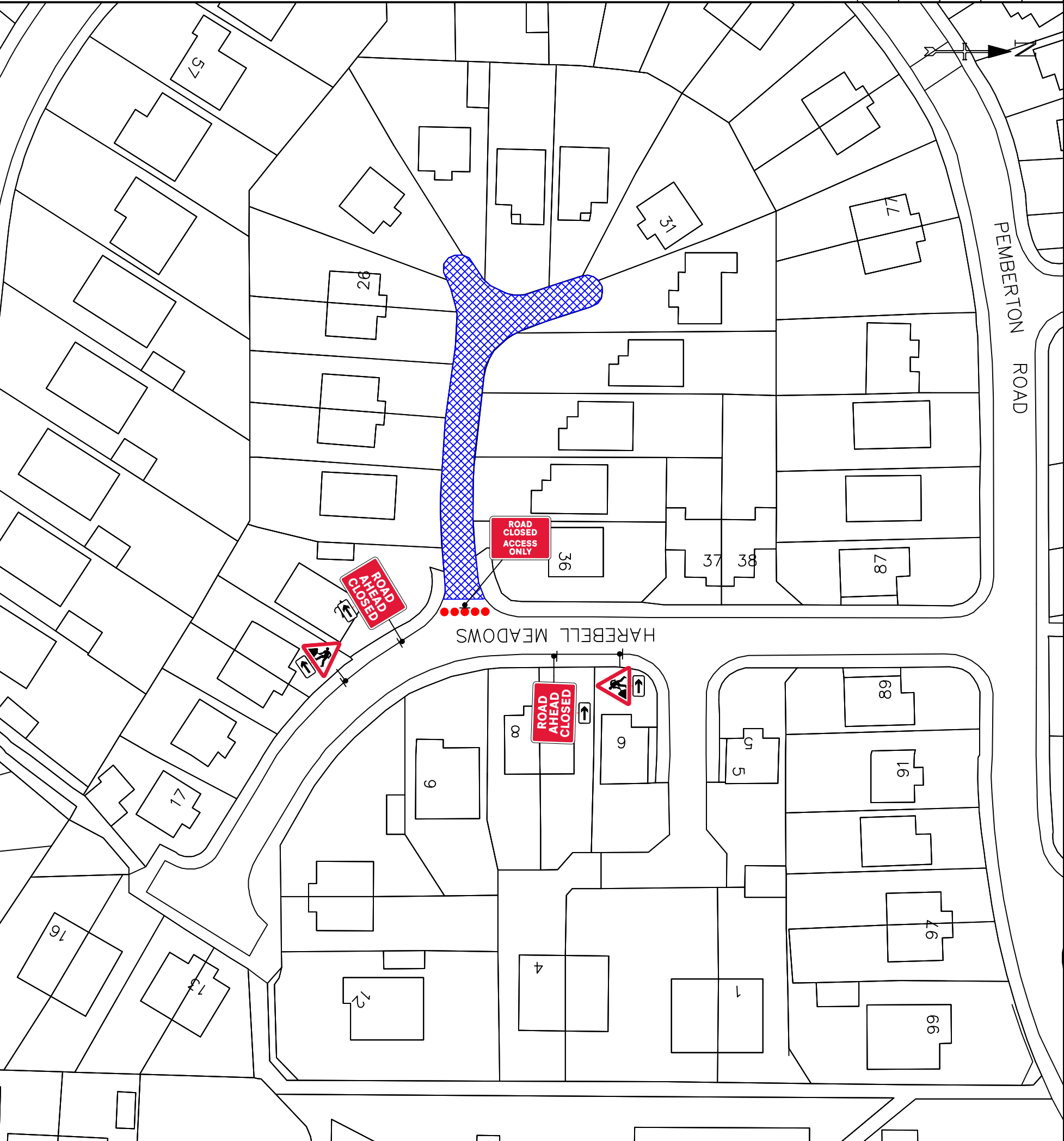
**Notes -**

**KEY**

	Traffic sign
	Traffic cone
	Traffic signals to Diagram 3000.1
	Working Space
	Pedestrian Barrier

Original drawing size A3 - NTS  
Drawing Ref: AVONLINE

Qty: 1 Ref: 15,9RCAQ Road Closed Access Only	
Qty: 2 Ref: 573 Direction to hazard left	
Qty: 2 Ref: 573 Direction to hazard right	
Qty: 2 Ref: 7001 Road works ahead	
Qty: 2 Ref: 7016FP-139 Nature of temporary hazard ahead - Road Ahead Closed	



TEMPORARY  
TRAFFIC MANAGEMENT  
30 MPH

Issue	Date
1	12/11/24
Drawn By	JC

ROAD CLOSURE  
HARBELL MEADOWS, NEWTON AYCLIFFE  
DL5 4UG

**DETAIL B**

- Single/Dual carriageway 40mph or less - 450mm traffic cones, spacing 1.5m.
  - Single/Dual carriageway 50mph or more - 750mm traffic cones, spacing 1.5m.
  - Dual carriageway national speed limit - 750mm traffic cones, spacing 1.5m, relaxation 5m.
- Notes:
- 1) During darkness, warning lights to BS EN 12352:2006 should be provided in accordance with Table A1.3 (Appendix 1).
  - 2) 45° tapered have 1.5m spacing, no relaxators.
  - 3) On all narrow ways and footpaths, standard road shoulders, 1m from the edge of the road, should be marked and delineation works for lead tapers and the leading wall of lane changes.



- Notes:
- 1) During darkness, warning lights to BS EN 12352:2006 should be provided in accordance with Table A1.3 (Appendix 1).
  - 2) Detail D applies only to relaxation cases.

	Standard, Normal traffic, including buses and HGVs	Restricted: Cars and light vehicles only
Two-way working	6.75 m minimum	5.25 m minimum
Shuttle working	3.25-5.50 m desirable width range	3.25 m desirable minimum width
	3.0 m absolute minimum	2.5 m absolute minimum

**Specials**



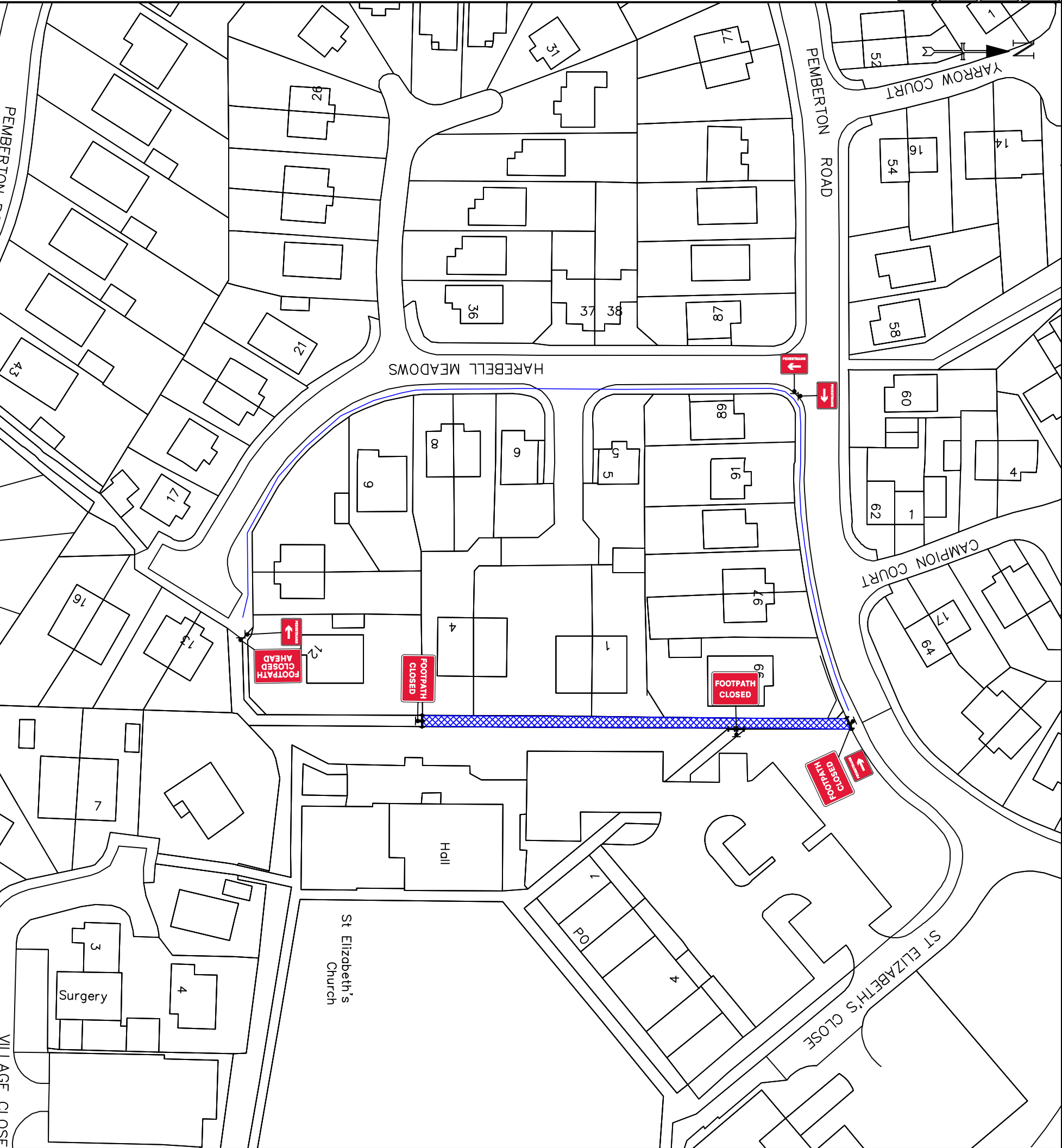
**Notes**

**KEY**

	Traffic sign
	Traffic cone
	Traffic signals to Diagram 3000.1
	Working Space
	Pedestrian Barrier

Original drawing size A3 - NTS  
Drawing Ref: AVONLINE

Dw/ 1 Ref: 13/9 Schedule 13/9: Temporary Information	<b>FOOTPATH CLOSED AHEAD</b> ↓
Dw/ 3 Ref: 7010/FP/13/9 Nature of temporary hazard ahead - Footpath Closed	<b>FOOTPATH CLOSED</b>
Dw/ 2 Ref: 7018 Pedestrian diversion Left	<b>PEDESTRIANS</b> ↑
Dw/ 2 Ref: 7018 Pedestrian diversion Right	<b>PEDESTRIANS</b> ↓



TEMPORARY  
TRAFFIC MANAGEMENT  
30 MPH

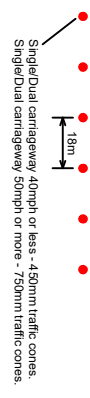
Issue	Date
1	12/11/24
Drawn By	JC

FOOTPATH CLOSURE + PEDESTRIAN MANAGEMENT  
HARBELL MEADOWS, NEWTON AYCLIFFE  
DL5 4UG

**DETAIL B** (B)

- Single/dual carriageway 40mph or less - 450mm traffic cones, spacing 1.5m.
  - Single/dual carriageway 50mph or more - 750mm traffic cones, spacing 1.5m.
  - Dual carriageway national speed limit - 750mm traffic cones, spacing 1.5m, relaxation 5m.
- Notes:
- 1) During darkness, warning lights to BS EN 12352:2006 should be provided in accordance with Table A1.3 (Appendix 1).
  - 2) 45° tapered cones have 1.5m spacing, no relaxations.
  - 3) Dual carriageway and 40mph or less roads should have 450mm cones, 1m relaxation.
  - 4) All cones should be placed on the leading side of the road works for lead tapers and the trailing side of lane changes.

**DETAIL D** (D)



- Single/dual carriageway 40mph or less - 450mm traffic cones, spacing 1.5m.
  - Single/dual carriageway 50mph or more - 750mm traffic cones, spacing 1.5m.
- Notes:
- 1) During darkness, warning lights to BS EN 12352:2006 should be provided in accordance with Table A1.3 (Appendix 1).
  - 2) Dual carriageway only to relaxation cases.

Two-way working	Standard, Normal traffic, including Buses and HGVs	Restricted: Cars and light vehicles only
3.25-4.50m desirable width range	6.75m minimum	5.5m minimum
3.0m absolute minimum	3.25-4.50m desirable width range	3.25m desirable minimum width
		2.5m absolute minimum

**Specials** -



**Notes** -

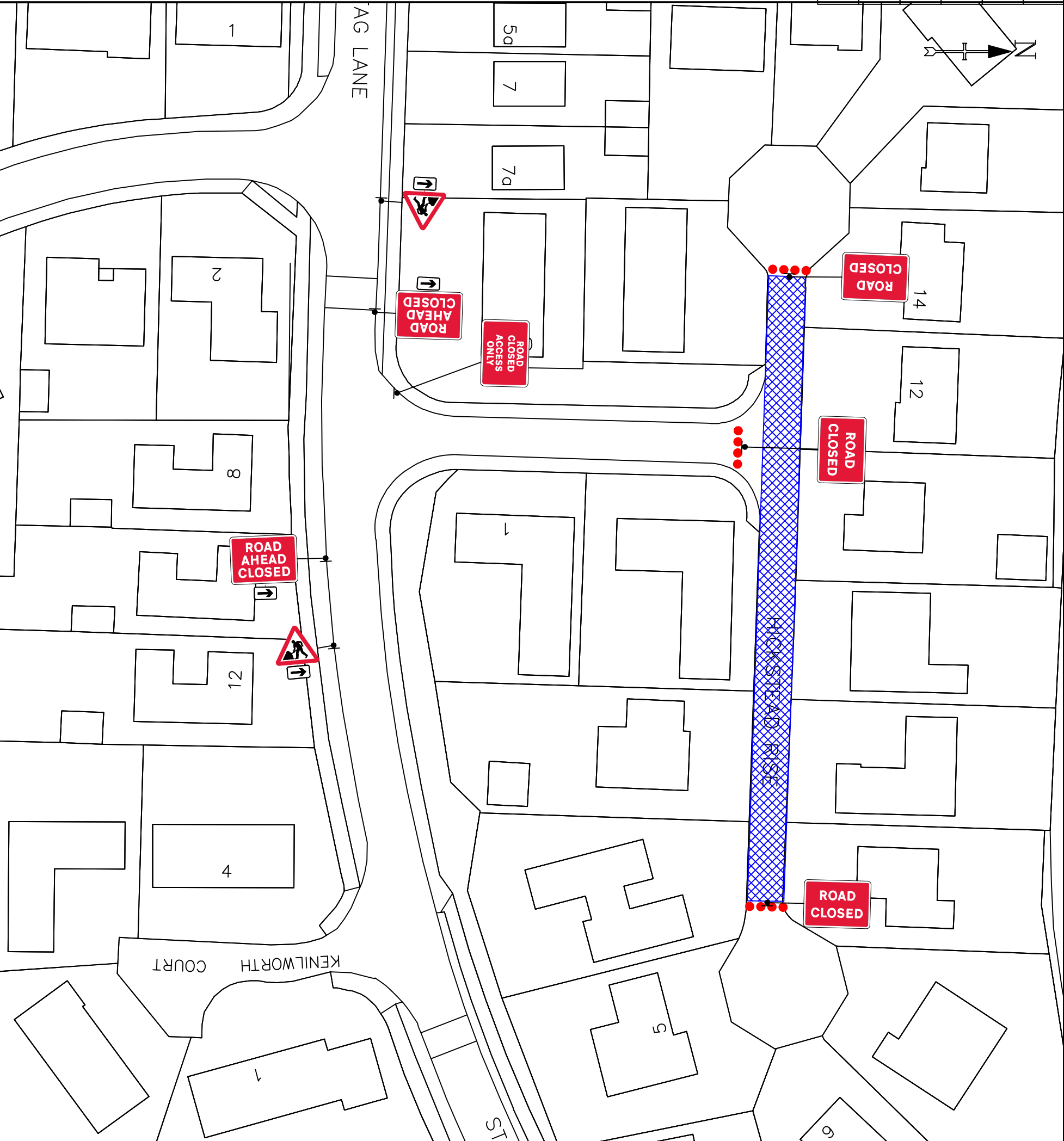
**KEY**

	Traffic sign
	Traffic cone
	Traffic signals to Diagram 3000.1
	Working Space
	Pedestrian Barrier

Original drawing size A3 - NTS

Drawing Ref: **AVONLINE**

Obj. 1 - Ref: 13-8-RC-AD Road Closed Access Only	
Obj. 2 - Ref: 573 Direction to hazard right	
Obj. 2 - Ref: 573 Direction to hazard left	
Obj. 2 - Ref: 7004 Road works ahead	
Obj. 2 - Ref: 7010-FR-13-9 Nature of temporary hazard ahead - Road Ahead Closed	
Obj. 3 - Ref: 7010-FR-13-9 Nature of temporary hazard ahead - Road Closed	



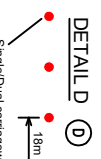
TEMPORARY  
TRAFFIC MANAGEMENT  
30 MPH

Issue	Date
1	12/11/24
Drawn By	JC

ROAD CLOSURE  
HICKSTEAD RISE, NEWTON AYCLIFFE  
DL5 4TP

**DETAIL B** (B)

- Single/Dual carriageway 40mph or less - 450mm traffic cones, spacing 1.5m.
  - Single/Dual carriageway 50mph or more - 750mm traffic cones, spacing 1.5m.
  - Dual carriageway national speed limit - 750mm traffic cones, spacing 1.5m, relaxation 5m.
- Notes:
- During darkness, warning lights to BS EN 12352:2006 should be provided in accordance with Table A1.3 (Appendix 1).
  - 45° tapers have 1.5m spacing, no relaxations.
  - 30m tapers and 1.5m spacing, no relaxations.
  - 30m tapers and 1.5m spacing, no relaxations, 1m relaxation.
  - 30m tapers and 1.5m spacing, no relaxations, 1m relaxation for lead tapers and the facing wall of lane changes.



- Notes:
- During darkness, warning lights to BS EN 12352:2006 should be provided in accordance with Table A1.3 (Appendix 1).
  - Detail D applies only to relaxation cases.

Two-way working	Standard, Normal traffic, including Buses and HGVs	Restricted: Cars and light vehicles only
6.75 m minimum	6.75 m minimum	5.5 m minimum
3.25-4.50 m desirable width range	3.25-4.50 m desirable width range	3.25 m desirable minimum width
3.0 m absolute minimum	3.0 m absolute minimum	2.5 m absolute minimum

**Specials -**



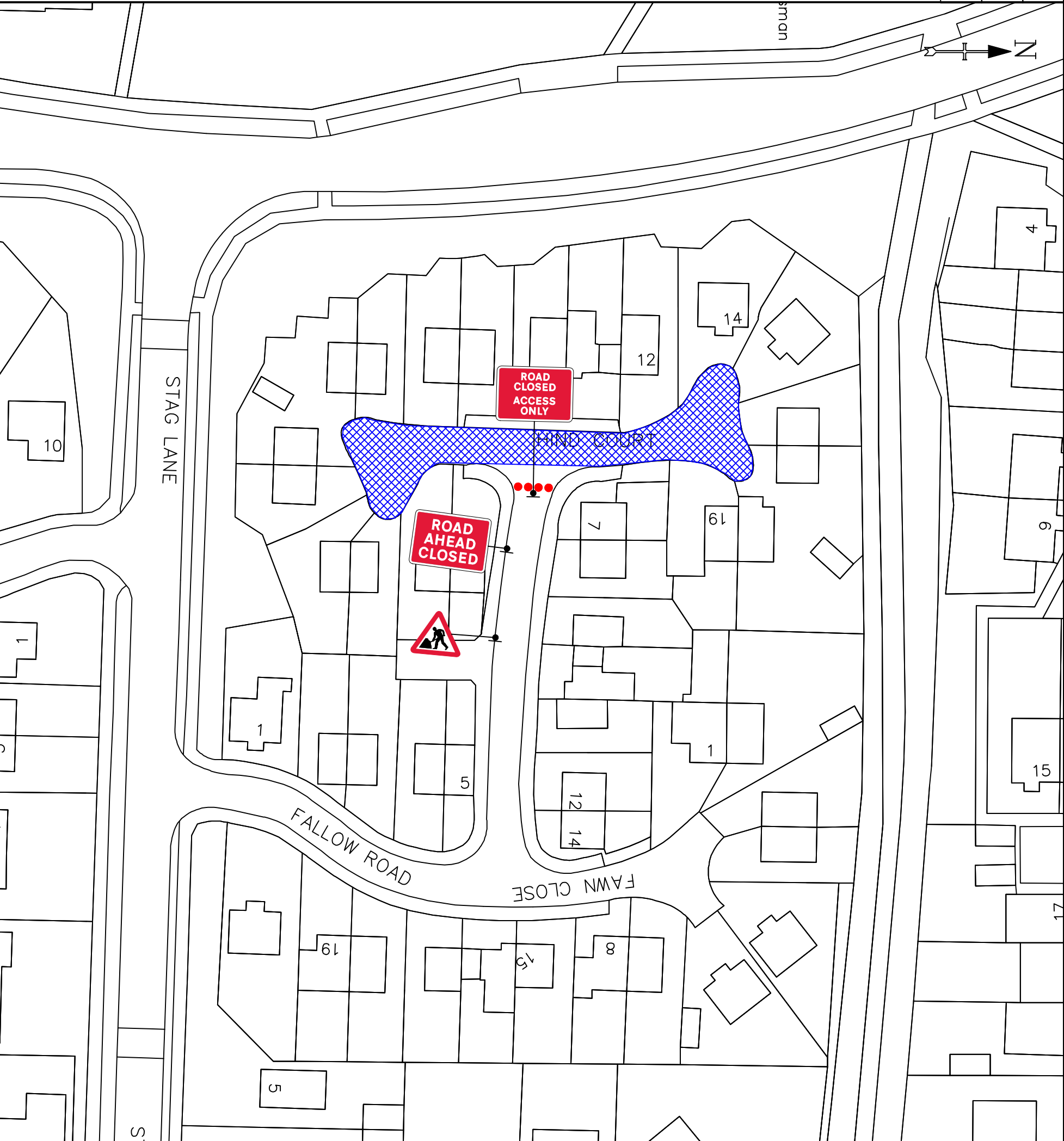
**Notes -**

**KEY**

	Traffic sign
	Traffic cone
	Traffic signals to Diagram 3000.1
	Working Space
	Pedestrian Barrier

Original drawing size A3 - NTS  
Drawing Ref: AVONLINE

Qty: 1 Ref: 134-RCAO Road Closed Access Only	
Qty: 1 Ref: 7001 Road works ahead	
Qty: 1 Ref: 7016-FP-139 Nature of temporary hazard ahead - Road Ahead Closed	



TEMPORARY  
TRAFFIC MANAGEMENT  
30 MPH

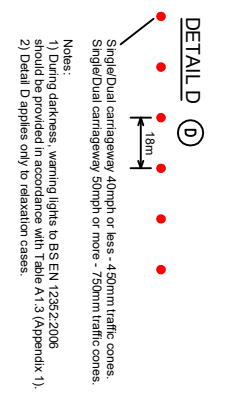
Issue	Date
1	12/11/24
Drawn By	JC

ROAD CLOSURE  
HIND COURT, NEWTON AYCLIFFE  
DL5 4SY

**DETAIL B**

Single/dual carriageway 40mph or less - 450mm traffic cones, spacing 1.5m.  
Single/dual carriageway 50mph or more - 750mm traffic cones, spacing 1.5m.  
Dual carriageway national speed limit - 750mm traffic cones, spacing 1.5m, relaxation 5m.

Notes:  
1) During darkness, warning lights to BS EN 12352:2006 should be provided in accordance with Table A1.3 (Appendix 1).  
2) 45° tapered have 1.5m spacing, no relaxators.  
3) On dual carriageway and 40mph or less roads, standard road shoulders, 1m relaxation will be provided in accordance with Table A1.3 (Appendix 1).  
4) Relaxators will be provided in accordance with Table A1.3 (Appendix 1) for lead tapers and the facing wall of lane changes.



Two-way working	Standard, Normal traffic, including Buses and HGVs	Restricted: Cars and light vehicles only
6.75 m minimum	6.75 m minimum	5.25 m minimum
3.25-4.50 m desirable width range	3.25-4.50 m desirable width range	3.25 m desirable minimum width
3.0 m absolute minimum	3.0 m absolute minimum	2.5 m absolute minimum

**Specials -**



**Notes -**

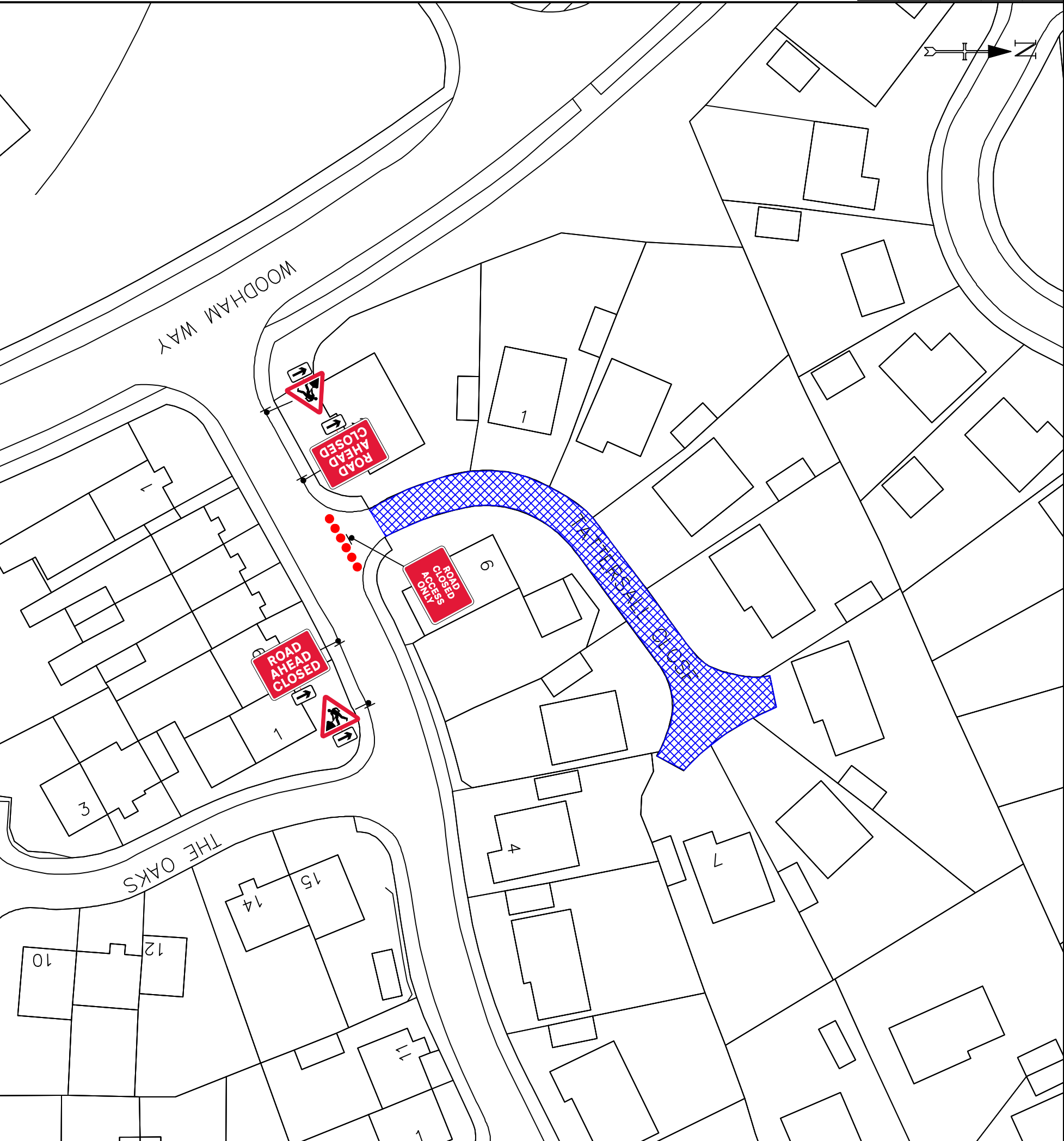
**KEY**

	Traffic sign
	Traffic cone
	Traffic signals to Diagram 3000.1
	Working Space
	Pedestrian Barrier

Original drawing size A3 - NTS  
Drawing Ref: AVONLINE



Qty: 1 Ref: 139-RC/A0 Road Closed/Access Only	
Qty: 2 Ref: 573 Direction to hazard right	
Qty: 2 Ref: 573 Direction to hazard left	
Qty: 2 Ref: 7001 Road works ahead	
Qty: 2 Ref: 7010-FP-139 Nature of temporary hazard ahead - Road Ahead Closed	



TEMPORARY  
TRAFFIC MANAGEMENT  
30 MPH

Issue	Date
1	12/11/24
Drawn By	JC

ROAD CLOSURE  
TATTERSALL CLOSE, NEWTON AYCLIFFE  
DL5 4TB

**DETAIL B** (B)

- Single/dual carriageway 40mph or less - 450mm traffic cones, spacing 1.5m.
  - Single/dual carriageway 50mph or more - 750mm traffic cones, spacing 1.5m.
  - Dual carriageway national speed limit - 750mm traffic cones, spacing 1.5m, relaxation 5m.
- Notes:
- 1) During darkness, warning lights to BS EN 12352:2006 should be provided in accordance with Table A1.3 (Appendix 1).
  - 2) 45° tapers have 1.5m spacing, no relaxations.
  - 3) On dual carriageways and for both standard and dual carriageways, 1m relaxation will be provided on the side of the road where the road works for lead tapers and the facing wall of lane changes.



- Notes:
- 1) During darkness, warning lights to BS EN 12352:2006 should be provided in accordance with Table A1.3 (Appendix 1).
  - 2) Detail D applies only to relaxation cases.

	Standard, Normal traffic, including Buses and HGVs	Restricted, Cars and light vehicles only
Two-way working	6.75 m minimum	5.25 m minimum
Shuttle working	3.25-4.50 m desirable width range	3.25 m desirable minimum width
	3.0 m absolute minimum	2.5 m absolute minimum

**Specials** -



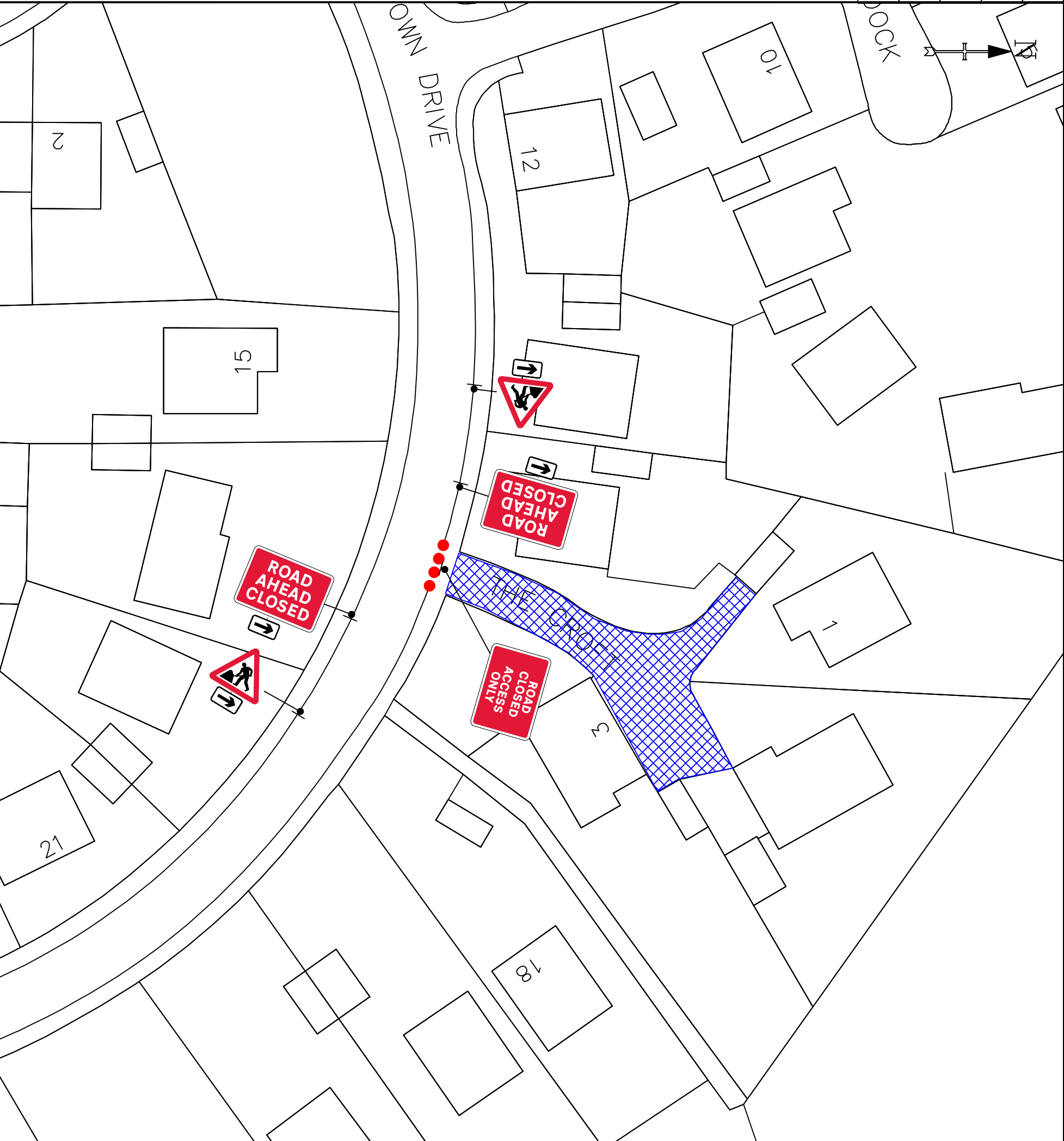
**Notes** -

**KEY**

	Traffic sign
	Traffic cone
	Traffic signals to Diagram 3000.1
	Working Space
	Pedestrian Barrier

Original drawing size A3 - NTS  
Drawing Ref: AVONLINE

Qty: 1 Ref: 13ARCAQ Road Closed Access Only	
Qty: 2 Ref: 573 Direction to hazard left	
Qty: 2 Ref: 573 Direction to hazard left	
Qty: 2 Ref: 7001 Road works ahead	
Qty: 2 Ref: 7016-FP-13-9 Nature of temporary hazard ahead - Road Ahead Closed	



TEMPORARY  
TRAFFIC MANAGEMENT  
30 MPH

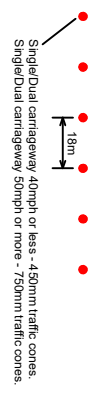
Issue	Date
1	12/11/24
Drawn By	JC

ROAD CLOSURE  
THE CROFT, NEWTON AYCLIFFE  
DL5 4TG

**DETAIL B** (B)

- Single/Dual carriageway 40mph or less - 450mm traffic cones, spacing 1.5m.
  - Single/Dual carriageway 50mph or more - 750mm traffic cones, spacing 1.5m.
  - Dual carriageway national speed limit - 750mm traffic cones, spacing 1.5m, relaxation 5m.
- Notes:
- During darkness, warning lights to BS EN 12352:2006 should be provided in accordance with Table A1.3 (Appendix 1).
  - 2145 tapers have 1.5m spacing, no relaxations.
  - 30mm kerbside and 100mm kerbside and 150mm kerbside, 1m relaxation.
  - 30mm kerbside and 100mm kerbside and 150mm kerbside, 1m relaxation.
  - for lead tapers and the facing wall of lane changes.

**DETAIL D** (D)



- Single/Dual carriageway 40mph or less - 450mm traffic cones, spacing 1.5m.
  - Single/Dual carriageway 50mph or more - 750mm traffic cones, spacing 1.5m.
- Notes:
- During darkness, warning lights to BS EN 12352:2006 should be provided in accordance with Table A1.3 (Appendix 1).
  - 2) Detail D applies only to relaxation cases.

Two-way working	Standard: Normal traffic, including buses and HGVs	Restricted: Cars and light vehicles only
3.25-4.50m desirable width range	6.75 m minimum	5.5 m minimum
3.0 m absolute minimum	3.25-4.50m desirable width range	3.25 m desirable minimum width
		2.5 m absolute minimum

**Specials -**



**Notes -**

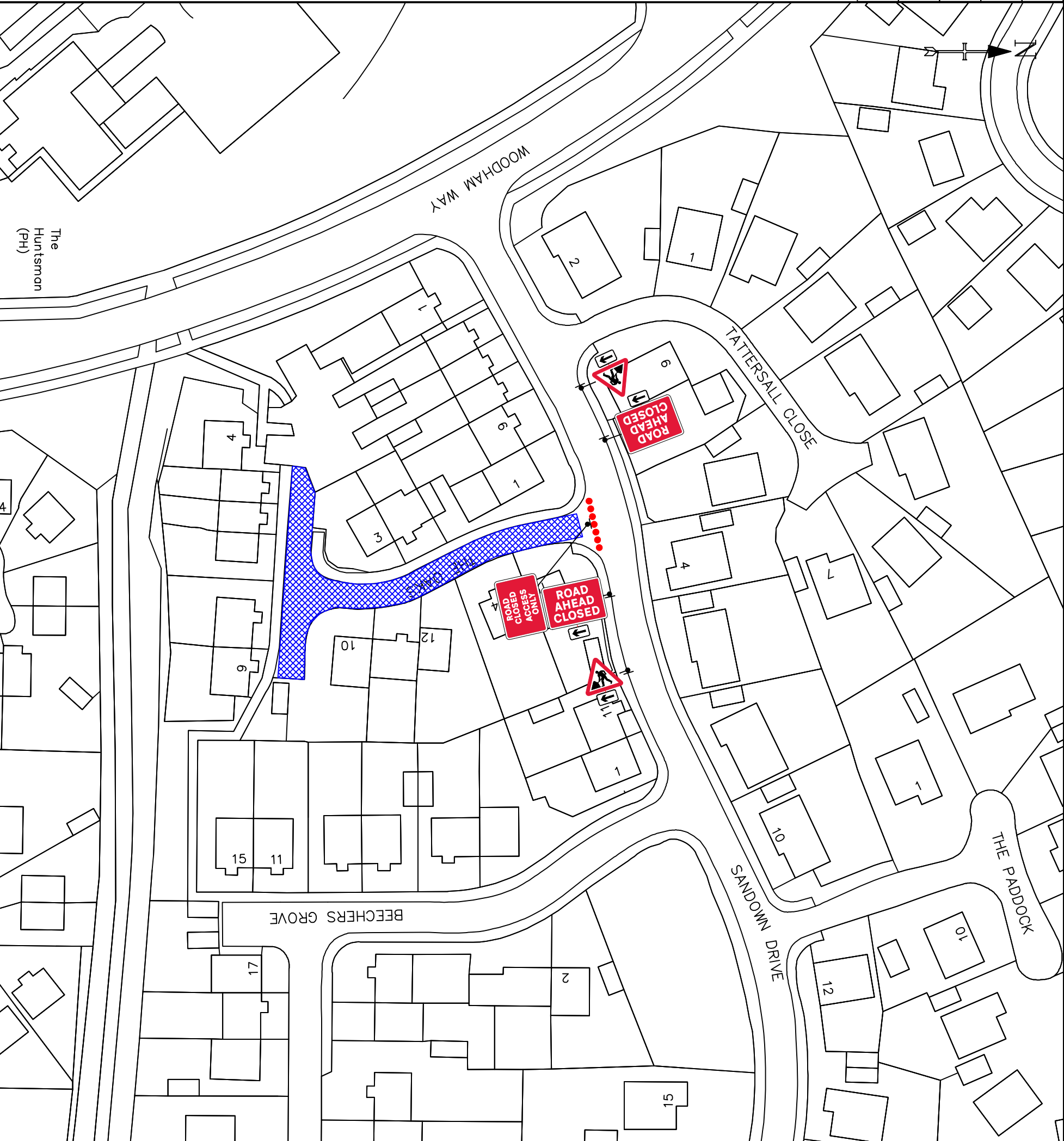
**KEY**

	Traffic sign
	Traffic cone
	Traffic signals to Diagram 3000.1
	Working Space
	Pedestrian Barrier

Original drawing size A3 - NTS

Drawing Ref: **AVONLINE**

Dy/1 Ref: 13,9RC/O Road Closed Access Only	
Dy/2 Ref: 573 Direction to hazard left	
Dy/2 Ref: 573 Direction to hazard right	
Dy/2 Ref: 7001 Road works ahead	
Dy/2 Ref: 7010/FP-13/9 Nature of temporary hazard ahead - Road Ahead Closed	



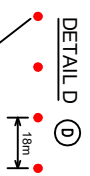
TEMPORARY  
TRAFFIC MANAGEMENT  
30 MPH

Issue	Date
1	12/11/24
Drawn By	JC

ROAD CLOSURE  
THE OAKS, NEWTON Aycliffe  
DL5 4TD

**DETAIL B** (B)

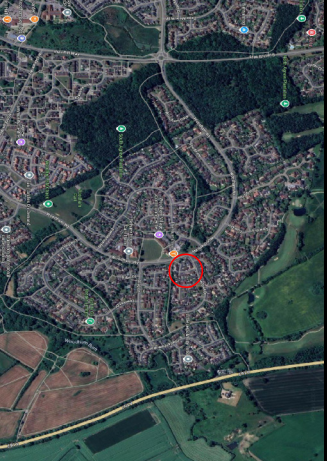
- Single/Dual carriageway 40mph or less - 450mm traffic cones, spacing 1.5m.
  - Single/Dual carriageway 50mph or more - 750mm traffic cones, spacing 1.5m.
  - Dual carriageway national speed limit - 750mm traffic cones, spacing 1.5m, relaxation 5m.
- Notes:
- 1) During darkness, warning lights to BS EN 12352:2006 should be provided in accordance with Table A1.3 (Appendix 1).
  - 2) 45t tapers have 1.5m spacing, no relaxations.
  - 3) On all highways and local roads, the minimum number of cones should be 1m from the start and end of the road works and 1m from the start and end of the road works for lead tapers and the facing wall of lane changes.



- Notes:
- 1) During darkness, warning lights to BS EN 12352:2006 should be provided in accordance with Table A1.3 (Appendix 1).
  - 2) Dual carriageway and local roads, the minimum number of cones should be 1m from the start and end of the road works and 1m from the start and end of the road works for lead tapers and the facing wall of lane changes.

Standard	Standard, Normal traffic, including buses and HGVs	Restricted: Cars and light vehicles only
Two-way working	6.75 m minimum	5.25 m minimum
Shoulder working	3.25-4.50 m (shoulder width range)	3.25 m (shoulder minimum width)
	3.0 m (absolute minimum)	2.5 m (absolute minimum)

**Specials** -



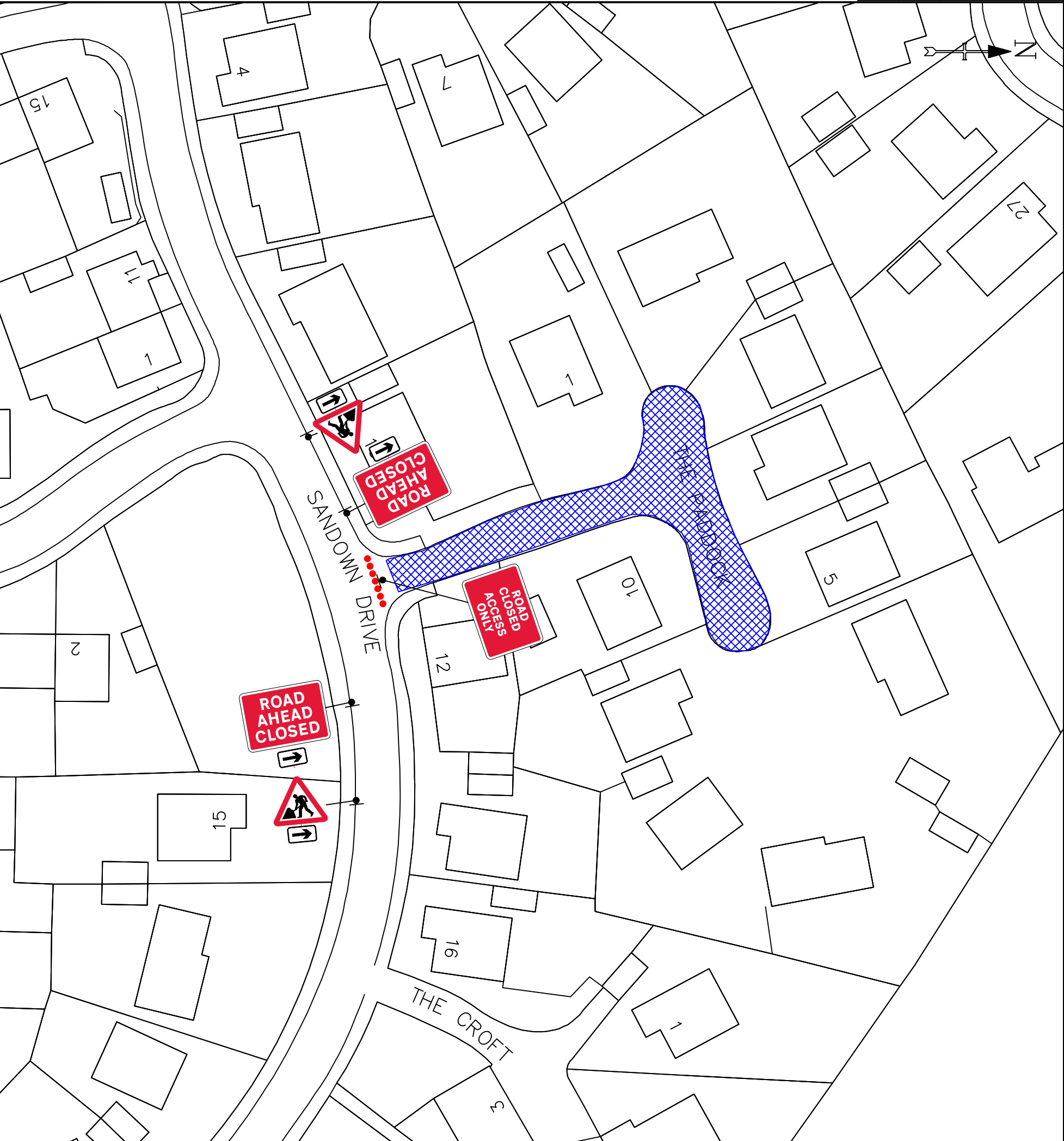
**Notes** -

**KEY**

	Traffic sign
	Traffic cone
	Traffic signals to Diagram 3000.1
	Working Space
	Pedestrian Barrier

Original drawing size A3 - NTS  
Drawing Ref: AVONLINE

Qty: 1 Ref: 134RC/O Road Closed Access Only	
Qty: 3 Ref: 573 Direction to hazard left	
Qty: 1 Ref: 573 Direction to hazard right	
Qty: 2 Ref: 7001 Road works ahead	
Qty: 2 Ref: 700-PP-1349 Nature of temporary hazard ahead - Road Ahead Closed	



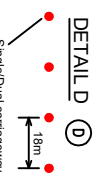
TEMPORARY  
TRAFFIC MANAGEMENT  
30 MPH

Issue	Date
1	12/11/24
Drawn By	JC

ROAD CLOSURE  
THE PADDOCK, NEWTON AYCLIFFE  
DL5 4TF

**DETAIL B** (B)

- Single/Dual carriageway 40mph or less - 450mm traffic cones, spacing 1.5m.
  - Single/Dual carriageway 50mph or more - 750mm traffic cones, spacing 1.5m.
  - Dual carriageway national speed limit - 750mm traffic cones, spacing 1.5m, relaxation 5m.
- Notes:
- During darkness, warning lights to BS EN 12352:2006 should be provided in accordance with Table A1.3 (Appendix 1).
  - 2145 tapers have 1.5m spacing, no relaxations.
  - 30mm (minimum) and 100mm (maximum) standard road shoulders, 1m relaxation will be provided for both standard and dual carriageway works for lead tapers and the tapering wall of lane changes.



- Notes:
- During darkness, warning lights to BS EN 12352:2006 should be provided in accordance with Table A1.3 (Appendix 1).
  - Usual 'D' applies only to relaxation cases.

	Standard: Normal traffic, including buses and HGVs	Restricted: Cars and light vehicles only
Two-way working	6.75 m minimum	5.5 m minimum
Shoulder working	3.25-5.50 m (shoulder width range)	3.25 m (shoulder minimum width)
	3.0 m (absolute minimum)	2.5 m (absolute minimum)

**Specials** -



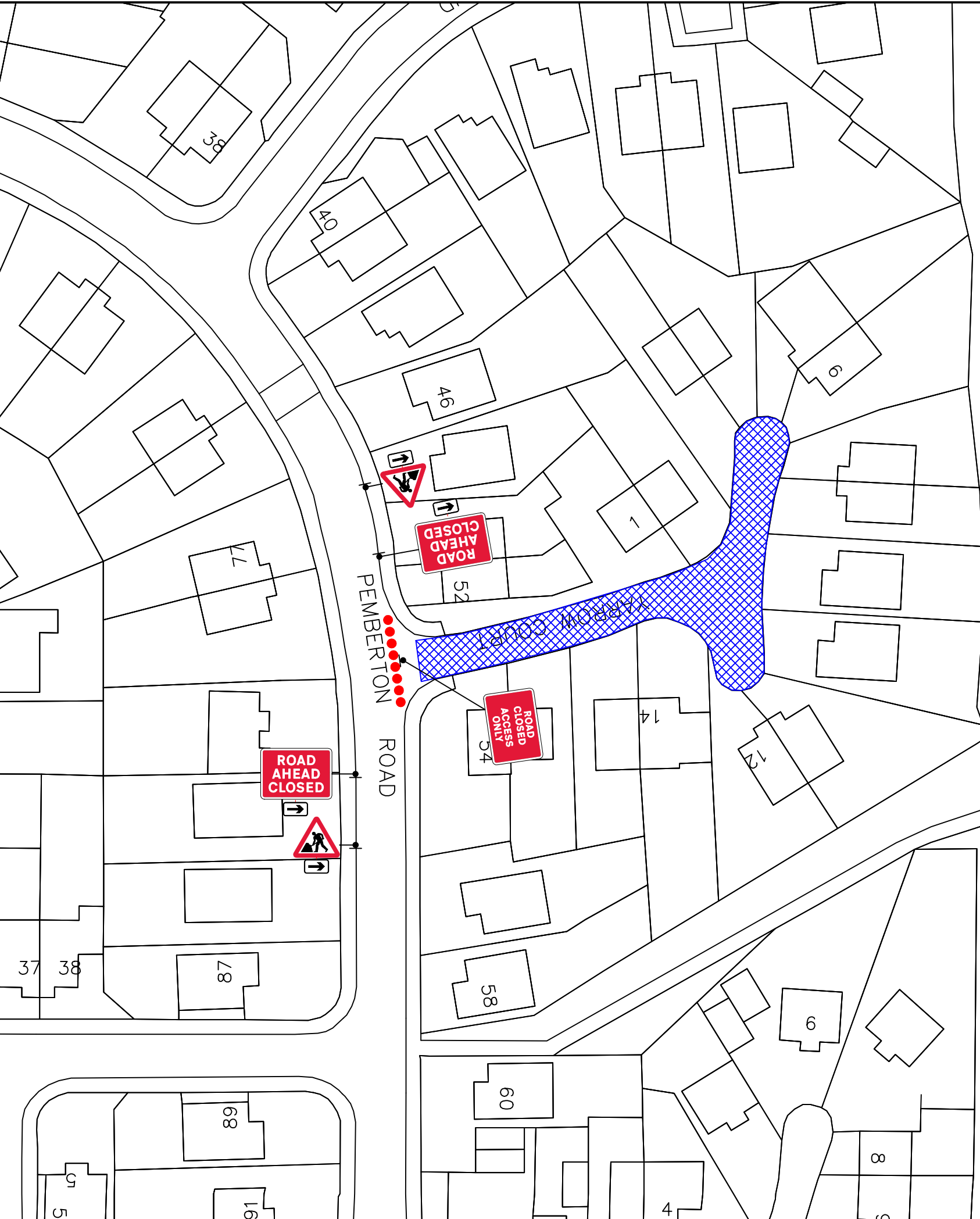
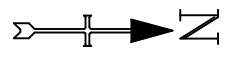
**Notes** -

**KEY**

	Traffic sign
	Traffic cone
	Traffic signals to Diagram 3000.1
	Working Space
	Pedestrian Barrier

Original drawing size A3 - NTS  
Drawing Ref: AVONLINE

Qty: 1 Ref: 13A/RCAO Road Closed Access Only	
Qty: 2 Ref: 573 Direction to hazard right	
Qty: 2 Ref: 573 Direction to hazard left	
Qty: 2 Ref: 7001 Road works ahead	
Qty: 2 Ref: 7010FP-13-9 Nature of temporary hazard ahead - Road Ahead Closed	



TEMPORARY  
TRAFFIC MANAGEMENT  
30 MPH

Issue	Date
1	12/11/24
Drawn By	JC

ROAD CLOSURE  
YARROW COURT, NEWTON AYCLIFFE  
DL5 4UQ

**DETAIL B** (B)

- Single/Dual carriageway 40mph or less - 450mm traffic cones, spacing 1.5m.
  - Single/Dual carriageway 50mph or more - 750mm traffic cones, spacing 1.5m.
  - Dual carriageway national speed limit - 750mm traffic cones, spacing 1.5m, relaxation 5m.
- Notes:
- During darkness, warning lights to BS EN 12352:2006 should be provided in accordance with Table A1.3 (Appendix 1).
  - 2145 tapers have 1.5m spacing, no relaxations.
  - 30mm kerbs and 100mm kerbs - 450mm traffic cones, 4m relaxation.
  - 30mm kerbs and 100mm kerbs - 750mm traffic cones, 4m relaxation.
  - for lead tapers and the facing wall of lane changes.



- Notes:
- During darkness, warning lights to BS EN 12352:2006 should be provided in accordance with Table A1.3 (Appendix 1).
  - Detail D applies only to relaxation cases.

Two-way working	Standard: Normal traffic, including buses and HGVs	Restricted: Cars and light vehicles only
3.25-4.50m desirable width range	6.75 m minimum	5.5 m minimum
3.0 m absolute minimum	5.25 m desirable minimum width	3.25 m desirable minimum width
		2.5 m absolute minimum

**Specials** -



**Notes** -

**KEY**

	Traffic sign
	Traffic cone
	Traffic signals to Diagram 3000.1
	Working Space
	Pedestrian Barrier

Original drawing size A3 - NTS  
Drawing Ref: AVONLINE